

MIT Cycling

Presents

The Wompatuck Whatchamacallit?!

Sunday, September 16, 2007

Phoben.com

Sunday, September 16, 2007



The MIT Cycling Club
Presents

The Wompatuck Whatchamacallit?!

**One day of cross-country and
short-track events!**

Located just outside Boston, MA!

Schedule

Cross Country

Event	Start	Laps	Distance
Men C	9:00 AM	1	7.5 miles
Women B	9:05 AM	1	7.5 miles
Men A	10:15 AM	3	22.5 miles
Men B	10:20 AM	2	15 miles
Women A	10:25 AM	2	15 miles

Short Track

Event	Start	Distance
Men C	10:30	15 minutes
Women B	10:50	15 minutes
Men B	12:30	20 minutes
Women A	12:55	20 minutes
Men A	1:20	25 minutes

Collegiate categories open only to current, eligible students holding USAC Collegiate licenses. One-day and yearly licenses will be available on-site. USAC Permit Pending.

Registration

Entry fee: \$13 for x-country events, \$9 for short-track events. BikeReg.com registration details will be posted to the ECCC calendar at <http://eccc-info.com/>. Day-of registration is an extra \$5 (**no late fee required for short-track!**); registration and check-in opens at 7:00AM. XC registration ends 30 minutes prior to each race; short track registration ends 5 minutes prior.

Join Us Camping!!!

We'll be there Saturday night (weather permitting), two minutes from the courses! Fee is \$15 per campsite. Ask to camp next to the MIT cycling team. Camping check-in is before 10PM.

The Courses

Both courses are the same awesome courses from last year: The cross country course is a challenging 7.5 mile course filled with all of your favorite terrain--- everything from rocky descents and twisting single-track to pavement. The short-track course is a fast course with few turns through the woods immediately by the start/finish of the XC course.

Directions

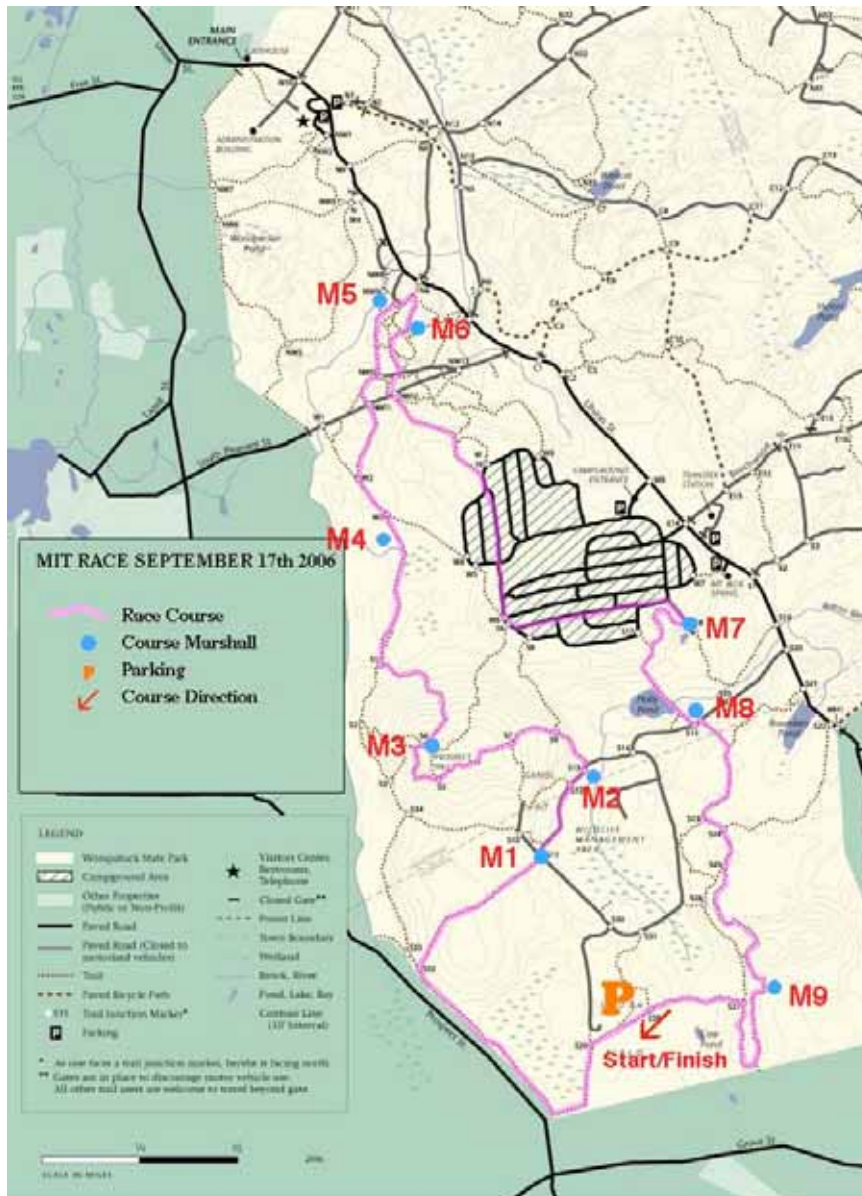
From the west: Take 90E. Take exit 14 to I-95 South/MA-128S. Take exit 12 to I-93N/US1-N. Take exit 7 to MA-3S towards Cape Cod. Take exit 14 on Rte 3 to Rte. 228. Go North on Rte. 228 (follow signs to Hingham). After 5 miles, turn right on Free Street. Go one mile and the park entrance will be on the right. Go 1.7 miles in the park until you see a sign for South Area. Turn right. At the end of the road (WATCH FOR BIKERS!), follow signs to parking and the start. (If you are camping, turn off at 1.5 miles to camping area).

From the south and Cape Cod: Take 95N until 93N/US-1N (exit 12 towards Boston). Merge onto MA-3S (exit 7 towards Cape Cod). Take exit 14 on Rte 3 to Rte. 228. Go North on Rte. 228 (follow signs to Hingham). After 5 miles, turn right on Free Street. Go one mile and the park entrance will be on the right. Go 1.7 miles in the park until you see a sign for South Area. Turn right. At the end of the road (WATCH FOR BIKERS!), follow signs to parking and the start. (If you are camping, turn off at 1.5 miles to camping area).

From the North: Take 93S to the Rte 3 turnoff. Follow Rte 3 S towards Cape Cod. Follow Rte 3 South to exit 14 and the intersection with Rte. 228. Go North on Rte. 228 (follow signs to Hingham). After 5 miles, turn right on Free Street. Go one mile and the park entrance will be on the right. Go 1.7 miles in the park until you see a sign for South Area. Turn right. At the end of the road (WATCH FOR BIKERS!), follow signs to parking and the start. (If you are camping, turn off at 1.5 miles to camping area).

Event Map

“P” is for parking. Camping is shaded in the center of the park. Come join us on Saturday night! (and ignore the date on the map)



Medical Info

Two Emergency Medical Technicians will be on-site. Ambulances stationed at Hingham Fire Department (less than 1 mile from the park) have been notified and will respond to emergencies at the park.

Promoter Contact

Ilana Brito, 617-817-8715, ibrito@mit.edu