



25th Annual ARMY Spring Classic

*United States Military Academy
West Point, New York*

April 5th and 6th 2008

Pre-Registration:

E-Mail: Steven.Pingree@usma.edu

Phone: 845-515-2981

Mail: Steve Pingree
P.O. Box 3780 USMA
West Point, NY
10997

Army Cycling water bottles will be given to all who pre-register

-Pre-Registration will only be accepted in the given registration format.

-Make checks payable to Director Cadet Activities

-NO Refunds will be given.

Registration Options:

Option 1:

- Email completed spreadsheet of team members (format below) to the email address above.
- Teams pre-registering as a team must pay in full as a team by check or cash.
- Team representative must bring entire team's fees and copy of each rider's school ID and USAC license to race day registration.

Option 2:

- Register online at BikeReg.com by **5 PM Wednesday, April 2nd**

Option 3:

- Mail check and Standard USA Cycling Release Form to the address above.
- This must be received by Wednesday April 2nd

REQUIRED REGISTRATION FORMAT:

Team:	EXAMPLE						
Name		Category	License	TTT	Circuit	Hill Climb	Criterion
Racer X		MN A	123456	Yes	Yes	No	Yes
Racer Y		WMN B	654321	Yes	Yes	Yes	Yes
Total Number of entries (per category)				2	2	1	2
Cost				\$25.00/team	\$13.00/rider	\$9.00/rider	\$13.00/rider
Total Race Cost (number of racers X cost)				\$50.00	\$26.00	\$9.00	\$26.00
Total Cost	\$111.00						

Team Time Trial: \$25.00 Per Time Trial Team

**Register NLT 2 April 2008

Circuit Race: \$13.00 Per Rider

**Register NLT 2 April 2008

Individual Time Trial/Hill Climb Registration: \$9.00 Per Rider

-All ITT Registration must be completed by Saturday, April 5th
at the Circuit Race Registration point.

Criterium Registration: \$13.00 Per Rider

-THERE IS NO RACE DAY REGISTRATION FOR THE CRITERIUM!!
-Riders may register for the Criterium on April 5th at the Circuit Race
Registration point.

Race Information

Team Time Trial

Saturday, April 5th 2008

United States Military Academy Reservation at Camp Buckner

<i>start</i>	<i>category</i>	<i>entry fee per team</i>	<i>length</i>	<i>prizes</i>
7:30 am	C Men	\$25	7.5 miles	points
to follow	D Men	\$25	7.5 miles	points
to follow	Intro to Racing M	\$25	7.5 miles	points
to follow	Intro to Racing W	\$25	7.5 miles	points
to follow	B Women	\$25	7.5 miles	points
to follow	A Men	\$25	15 miles	points
to follow	B Men	\$25	15 miles	points
to follow	A Women	\$25	15 miles	points

The team time trial will be held on Route 293. The course is approximately 15 miles long (2 turn arounds) for Men's A's and B's and Women's A's and 7.5 miles long (1 turn around) for Women's B and C/Intro and Men's C and D riders. (Parking for Saturday's racing will be at Camp Buckner, off of 293). The team time trial will begin at 7:30 AM. Order of events is as listed; Start list by category ("Rutgers" format).

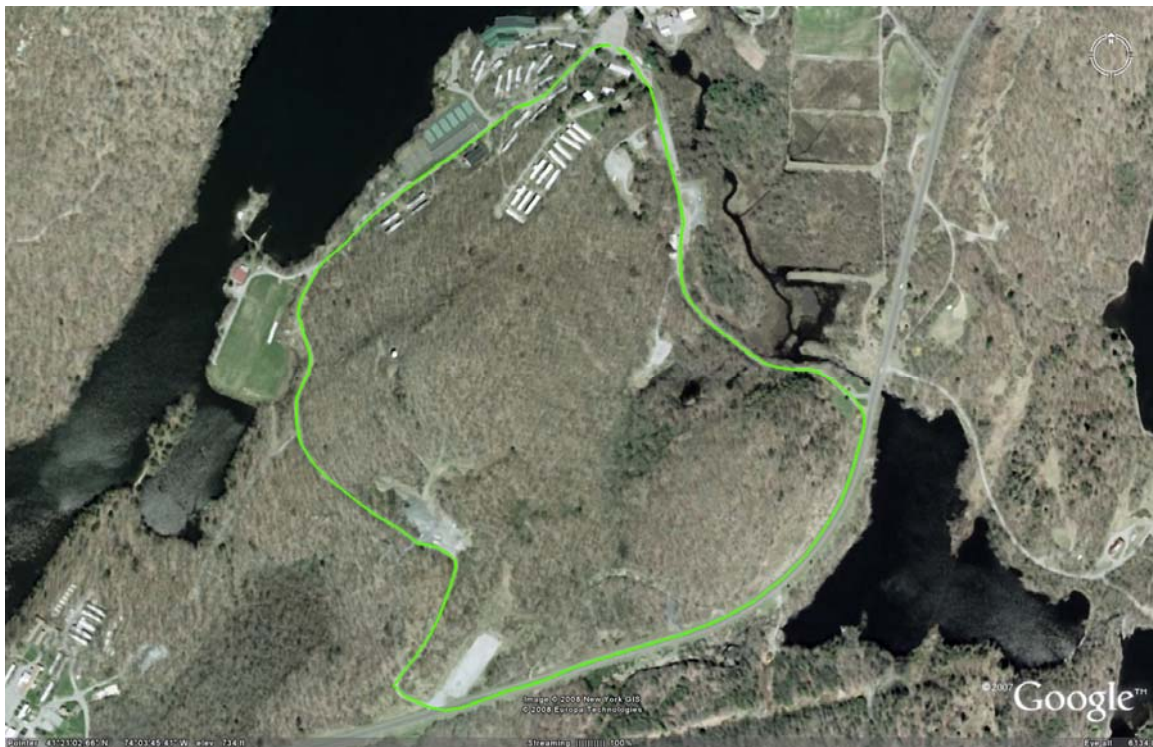
CIRCUIT RACE

Saturday, April 5th 2008

United States Military Academy Reservation at Camp Buckner

The circuit race will be held at Camp Buckner. The course is approximately 2.07 miles long, and begins with a right turn out of Camp Buckner on to 293, then a right turn into Area K, which results in a short, scenic, but significantly steep power climb to test the warrior within. The climb is followed by a fast downhill which will slingshot riders past Lake Popolopen and the cadet summer living quarters before returning to the start. The circuit race will start at 9:30 AM.

<i>start</i>	<i>category</i>	<i>entry fee</i>	<i>length</i>	<i>prizes</i>
9:30 am	Intro to Racing M/W(concurrent)	\$13	30 minutes	points
to follow	D Men	\$13	30 minutes	points
to follow	C Men	\$13	45 minutes	points
to follow	B Women	\$13	45 minutes	points
to follow	B Men	\$13	90 minutes	points
to follow	A Women	\$13	90 minutes	points
to follow	A Men	\$13	2 hours	points



INDIVIDUAL TIME TRIAL/HILL CLIMB:

Sunday, April 6th 2008

United States Military Academy, West Point

The ultimate hill climb time trial in the ECCC! Each rider will experience the beauty and pain that is Stoney Lonesome.

First Racer will leave at 7:45 AM., riders will then leave at 30 second intervals. There will be no break between categories. The order of the categories will be:

<i>start</i>	<i>category</i>	<i>entry fee per team</i>	<i>length</i>	<i>prizes</i>
7:45 am	C Men	\$9	2.5 miles	points
to follow	D Men	\$9	2.5 miles	points
to follow	B Women	\$9	2.5 miles	points
to follow	Intro to Racing M	\$9	2.5 miles	points
to follow	Intro to Racing W	\$9	2.5 miles	points
to follow	A Men	\$9	2.5 miles	points
to follow	B Men	\$9	2.5 miles	points
to follow	A Women	\$9	2.5 miles	points



This is a very challenging course. Riders will encounter over 650 ft of climbing in 2.5 miles with grades up to 10%. The course starts at the finish line of the criterium course.

Criterium

Sunday, April 6th 2008

United States Military Academy, West Point

Course:

The course will start down by the river near Gillis Field House with a steep hill climb followed by a right hand turn under Eisenhower Hall. There is a fast downhill around the back of Shea Stadium and a 90 degree right hand turn back down along the Hudson River to Gillis Field House. The course will be entirely closed to traffic. Each lap is approximately 1 kilometer with racing visible to spectators for most of the lap. There are many great spectator spots on this course, so bring your cow-bells!

*due to circumstances beyond our control, the criterium course is subject to change



Each race immediately follows the one before it.

<i>start</i>	<i>category</i>	<i>entry fee per team</i>	<i>length</i>	<i>prizes</i>
10:00 am	Intro to Racing M	\$13	15 min +1 lap	points

<i>to follow</i>	<i>Intro to Racing W</i>	<i>\$13</i>	<i>15 min +1 lap</i>	<i>points</i>
<i>to follow</i>	<i>D Men</i>	<i>\$13</i>	<i>20 min +2 laps</i>	<i>points</i>
<i>to follow</i>	<i>C Men</i>	<i>\$13</i>	<i>30 min +2 laps</i>	<i>points</i>
<i>to follow</i>	<i>B Women</i>	<i>\$13</i>	<i>30 min +2 laps</i>	<i>points</i>
<i>to follow</i>	<i>B Men</i>	<i>\$13</i>	<i>45 min +2 laps</i>	<i>points</i>
<i>to follow</i>	<i>A Women</i>	<i>\$13</i>	<i>50 min +2 laps</i>	<i>points</i>
<i>to follow</i>	<i>A Men</i>	<i>\$13</i>	<i>60 min +2 laps</i>	<i>points</i>

Directions to Camp Buckner

Saturday, 5 April (TTT and Circuit)

From the North (on I-87 South), West (on I-84 East), or East (on I-84 West): From the North, exit off I-87 South to I-84 East towards CT. After only a few short miles, exit off I-84 to Route 9W at Newburgh, NY. From the West, exit off I-84 East to Route 9W at Newburgh, NY. From the East, after crossing the Newburgh-Beacon Bridge, exit off I-84 West to Route 9W at Newburgh, NY. ALL, follow Route 9W South through Newburgh and over Storm King Mountain. After coming down the south side of the mountain, you will be faced with 3 right side exits for West Point. The 1st exit appears immediately after you finish the steep descent over the mountain and is for West Point and Route 293 / Route 218 North. Get off at the first exit and turn left on to Route 293 at the bottom of the ramp. Camp Buckner is approximately 3 miles down the road on the right hand side.

From the South (on I-287 / I-87 North): Exit off I-87 North (NY Thruway) to Route 6 East before the main stream toll booths. You'll pass through your own toll booths (50 cents) after exiting, so don't be alarmed that it appears as though your are bypassing the main toll booths on the highway. After the toll booth, get in the right lane to exit the freeway. At the traffic light, turn left and proceed on Highway 17 for two more lights. Make the next left onto Route 6 East. You'll see West Point signs along the way also. Once on Route 6 East, you'll travel about 3 miles uphill until the two lanes merge into one. Shortly thereafter, you'll bear left off of Route 6 East for Route 293 (look for the West Point sign - this is easy to miss). Proceed on Route 293, Camp Buckner will be on the left hand side of the road (with a flashing yellow light).

Directions to West Point

Sunday, 6 April (Hill Climb and Criterium)

From the North (on I-87 South), West (on I-84 East), or East (on I-84 West): From the North, exit off I-87 South to I-84 East towards CT. After

only a few short miles, exit off I-84 to Route 9W at Newburgh, NY. From the West, exit off I-84 East to Route 9W at Newburgh, NY. From the East, after crossing the Newburgh-Beacon Bridge, exit off I-84 West to Route 9W at Newburgh, NY. ALL, follow Route 9W South through Newburgh and over Storm King Mountain. After coming down the south side of the mountain, you will be faced with 3 right side exits for West Point. The 1st exit appears immediately after you finish the steep descent over the mountain and is for West Point and Route 293 / Route 218 North. You must continue on and exit for Stoney Lonesome gate to get on post. Follow signs to bike race and Shea Stadium for Hill ITT and Criterium.

From the South (on I-287 / I-87 North): Exit off I-87 North (NY Thruway) to Route 6 East before the main stream toll booths. You'll pass through your own toll booths (50 cents) after exiting, so don't be alarmed that it appears as though your are bypassing the main toll booths on the highway. After the toll booth, get in the right lane to exit the freeway. At the traffic light, turn left and proceed on Highway 17 for two more lights. Make the next left onto Route 6 East. You'll see West Point signs along the way also. Once on Route 6 East, you'll travel about 3 miles uphill until the two lanes merge into one. Shortly thereafter, you'll bear left off of Route 6 East for Route 293 (look for the West Point sign - this is easy to miss). Proceed on Route 293 continuing past Camp Buckner (with a flashing yellow light) to 9W. Take 9 W South to the next exit & follow signs to Stoney Gate entrance. Follow signs to bike race & Shea Stadium for Hill ITT & Criterium.

**EVERYONE ENTERING WEST POINT
MUST HAVE A VAILD PHOTO ID!!!!!!**