



Dartmouth College · April 26 & 27, 2008

SATURDAY - Hanover, NH
Hanover TTT
Frat Row Crit

SUNDAY - North Haverhill, NH
Moosilauke Road Race



L'Enfer du Nord
Eastern Collegiate Cycling Championships, April 26 & 27, 2008
Hosted by Dartmouth College
USCF Permit #2008-99

Registration:

Pre-register online at BikeReg.com: <http://www.bikereg.com/events/register.asp?eventid=6353>

Pre-registration closes Wednesday at 11:59pm. Sorry, no mail-in or email registration.

\$5 Late fee PER RACE for day-of registration. NO DAY-OF REGISTRATION for the TTT. Valid USCF license required for all races. One-day USCF license may be purchased at registration for \$10 per day. Prizes will be trophies, medals and points, except for crit primes.

Lodging:

Comfort Inn White River Junction – (802) 295 3051

Discounted rate: \$79/night plus tax. Must reserve by April 14th and mention “Easterns Bike Race” for discount. 30 rooms blocked for racers.

Days Inn Lebanon – (603) 448 5070

Standard rate: \$109/night plus tax. 20 rooms blocked.

Team Time Trial – Saturday, April 26, 8:00am – 9:45am

Parking will be at the Medical School parking lot on the Dartmouth College campus in Hanover, NH (see directions page). Parking will be in this lot for all events on Saturday.

Registration will be at the tent in the Parking lot.

Teams should leave the parking lot at least ten minutes before their start time. The TTT start is about 1 mile from the parking lot. Do not miss your start time! Times will be calculated based on assigned start time, regardless of a missed start. This is good practice for Nationals.

Start times will be emailed to the ECCC listserv on Thursday and will be posted at check-in. Entry Fee is \$20 per team. No day-of registration for the TTT.

Course: Out and back, 10 miles total, starting from the Rugby Fieldhouse parking lot on Reservoir Road, about one mile north of the Medical School parking lot on Route 10. Teams will proceed into the traffic circle, turning north onto Route 10, straight through a second traffic circle, and down Chieftain Hill – a brief, fast descent. The remainder of the course is rolling; turnaround will be 5 miles north. Teams will return on Route 10 south, back up Chieftain and through the traffic circle, finishing before the intersection with Reservoir Road.

Schedule: (start times will be sent to the ECCC List and posted at registration)

Registration	7:00 a.m.
Men C	8:00
Men D	To follow
Men Intro	To follow
Women Intro	To follow
10 minute break	To follow
Men A	To follow
Men B	To follow
Women A	To follow
Women B	To follow



BY CHOICE HOTELS

Frat Row Criterium – Saturday, April 26, 10:25am – 5:50pm

Parking will be at the Medical School parking lot on the Dartmouth College campus in Hanover, NH (see directions page). Parking will be in this lot for all events on Saturday.

Entry fee \$13, \$5 late fee for day-of registration. Prizes will be awarded for primes. Karaoke will be near the Start/Finish.

Registration will move to the Criterium start/finish line once all TTT teams are under way.

Course: The technical, ¾ mile, six corner Frat Row Crit winds through the Dartmouth College campus with its start/finish on Webster Ave. (Frat Row). Head south on Route 10 from the Medical School parking lot and take the first right on Maynard Road. Continue to the stop sign; the course will be to the left

Schedule:

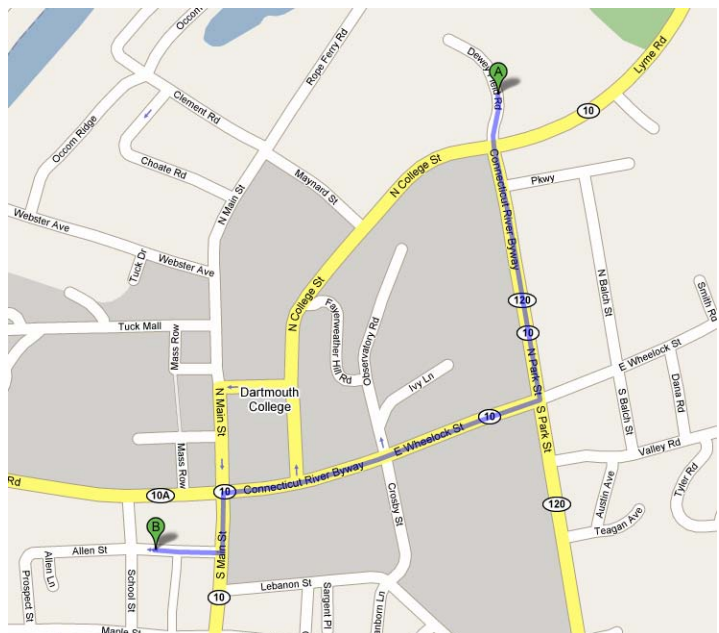
Men's D1	10:25 a.m.	30 min
Men's D2	11:05	30 min
Men's C1	11:45	35 min
Men's C2	12:30 p.m.	35 min
Men's Intro	1:15	20 min
Women's Intro	1:45	20 min
Women's B	2:15	35 min
Men's B	3:00	45 min
Women's A	3:55	45 min
Men's A	4:50	60 min

Banquet – Saturday, April 26, 5:00pm – 8:00pm

Location: Everything but Anchovies (EBA's) restaurant in downtown Hanover. Tickets are \$9 on bike-reg, \$10 at the door. Menu: Spaghetti, marinara sauce, meatballs, steamed vegetables, salad, dessert, soft drinks, and bottled water. Eat in or take-out.

Directions to EBA's: 5 Allen St, Hanover, NH.

From the Medical School parking lot: Head straight through the lights out of the main entrance/exit to the parking lot to go south on Route 120 / North Park St. Take a right at the next set of lights on E Wheelock Street. Turn left at the next set of lights on Main St. Take the very first right onto Allen St. EBA's will be on the right. There is a large parking lot to the left.



Mount Moosilauke Road Race – Sunday, April 27, 7:00am – 4:00pm
 Parking, staging and finish will be at Haverhill Coop Middle School in North Haverhill, NH.
 Entry fee \$13, \$5 late fee for day-of registration.

All races will be followed by a neutral support vehicle. Wheels in / wheels out. Feed zone will be near the start/finish.

Courses:

The short course (12 miles) turns left out of the Haverhill Coop Middle School on Route 116 and proceeds over rolling terrain to Route 10. Here the race turns left (south) on Route 10 and then left (east) on Route 25. A left turn on Brushwood Road begins the (relatively) small climb. Brushwood road T's into Route 116; a left begins a new lap, a right heads back towards the Middle School and the Finsih.

The long course (51 miles – the longest course in ECCC history!) heads right (east) on Route 116 out of the Middle School over moderately rolling hills. Use caution over the bridge just before the right turn on to Route 112. After about 5 miles the climb up Kinsman Notch begins and ultimately gains 1,100 feet. Use caution on the steep, straight descent, where speeds of 60mph+ are possible. Once the descent becomes more gradual, the course takes a hard right on Route 118 / Mount Moosilauke Highway. The main climb begins immediately and continues relentlessly for 5 miles and 1,600 vertical feet. A fun, winding descent (be careful of frost heaves) descends back to Route 25. After 10 rolling miles a right turn on Brushwood Road joins the short course, where a small climb, descent, and right hand turn bring racers back to the start/finish.

Schedule:

Registration	7:00a.m.		
Men's D	8:00	3 short laps	36 mi
Women's B	8:10	3 short laps	36
Men's Intro	8:20	1 short lap	12
Women's Intro	8:30	1 short lap	12
Men's A	11:00	2 long laps	102
Men's C	11:10	1 long lap	51
Men's B	11:20	1 short + 1 long lap	63
Women's A	11:30	1 short + 1 long lap	63
Awards	To follow (~4:00 p.m.)		

Directions – Saturday, Dartmouth Medical School Parking Lot
Google/Mapquest location: Dewey Field Road, Hanover, NH

From I-91 Northbound take exit 13 for Norwich and Hanover, NH. Turn right (east) at the end of the ramp. Cross the Connecticut River, drive up the hill into the town of Hanover. Go through a set of lights; the “Campus Green” will be on your left. Take the next left on College St – continue along the perimeter of the green. The next stoplight will be in about ½ mile. Take a left into the parking lot.

From I-91 Southbound take exit 13 for Norwich and Hanover, NH. Turn left (east) at the end of the ramp. Follow directions from I-91 Northbound from here.

From I-89 Northbound take exit 18 for Lebanon and Hanover. Turn right at the end of the ramp. This is Route 120; continue straight for several miles. As you come in to Hanover, you will need to bear right to stay on Route 120. Continue straight on Route 120 through town. At the final set of lights, you will proceed straight, entering the Medical School Parking Lot.

From I-89 Southbound take the exit for I-91 North. Follow directions from I-91 Northbound from here.

Directions – Sunday, Haverhill Coop Middle School
Google/Mapquest location: 175 Morrill Dr, North Haverhill, NH 03774

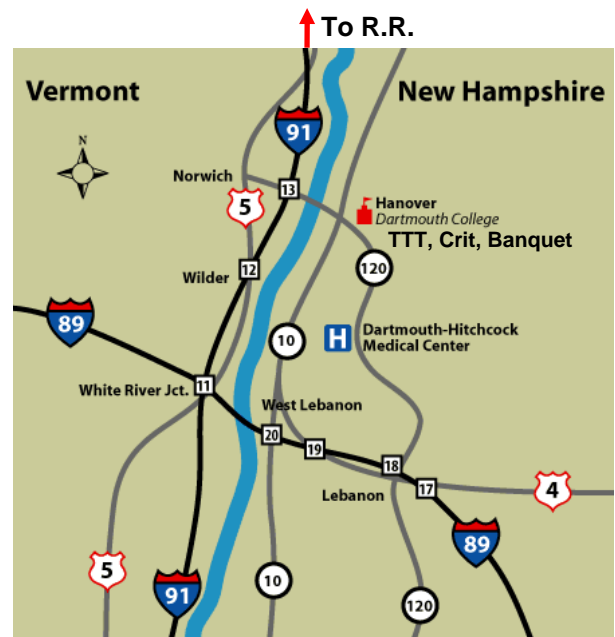
From I-91 Northbound (Hanover Area) take exit 16 for VT-25 South towards Bradford. Turn right at the end of the ramp. Stay straight on VT-25 crossing Route 5, and continue over the Connecticut River. Take a left on Route 10 and head north. After 9.2 miles turn right on Route 116. The Haverhill Coop Middle School will be on the right in 0.4 miles, just past the airport.
Note: Drive time from Hanover area is approximately 1 hour.

From I-91 Southbound take exit 17 for US-302 / Wells River. Turn left at the end of the ramp. Follow RT-302 through Wells River, and into New Hampshire. Take a right on Route 10 South. Turn left on Route 116. The Haverhill Coop Middle School will be on the right in 0.4 miles, just past the airport.

Contact Info:
Erik T. Newman
Erik.T.Newman@Dartmouth.edu
(340) 513-1525
Hinman Box 4026
Dartmouth College
Hanover, NH 03755

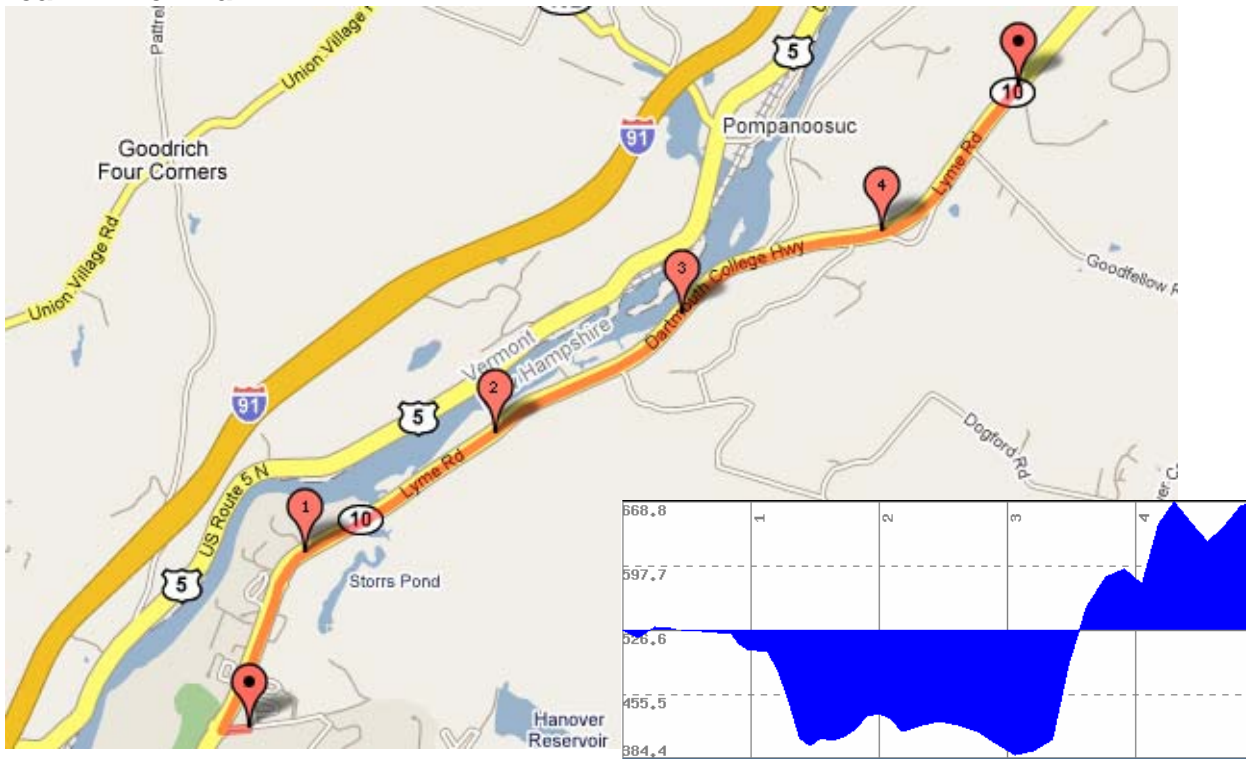
Jonathan Awerbuch
Rudy@Dartmouth.edu
(603) 318-5508

Todd Yezefski
hulkster@dartmouth.edu

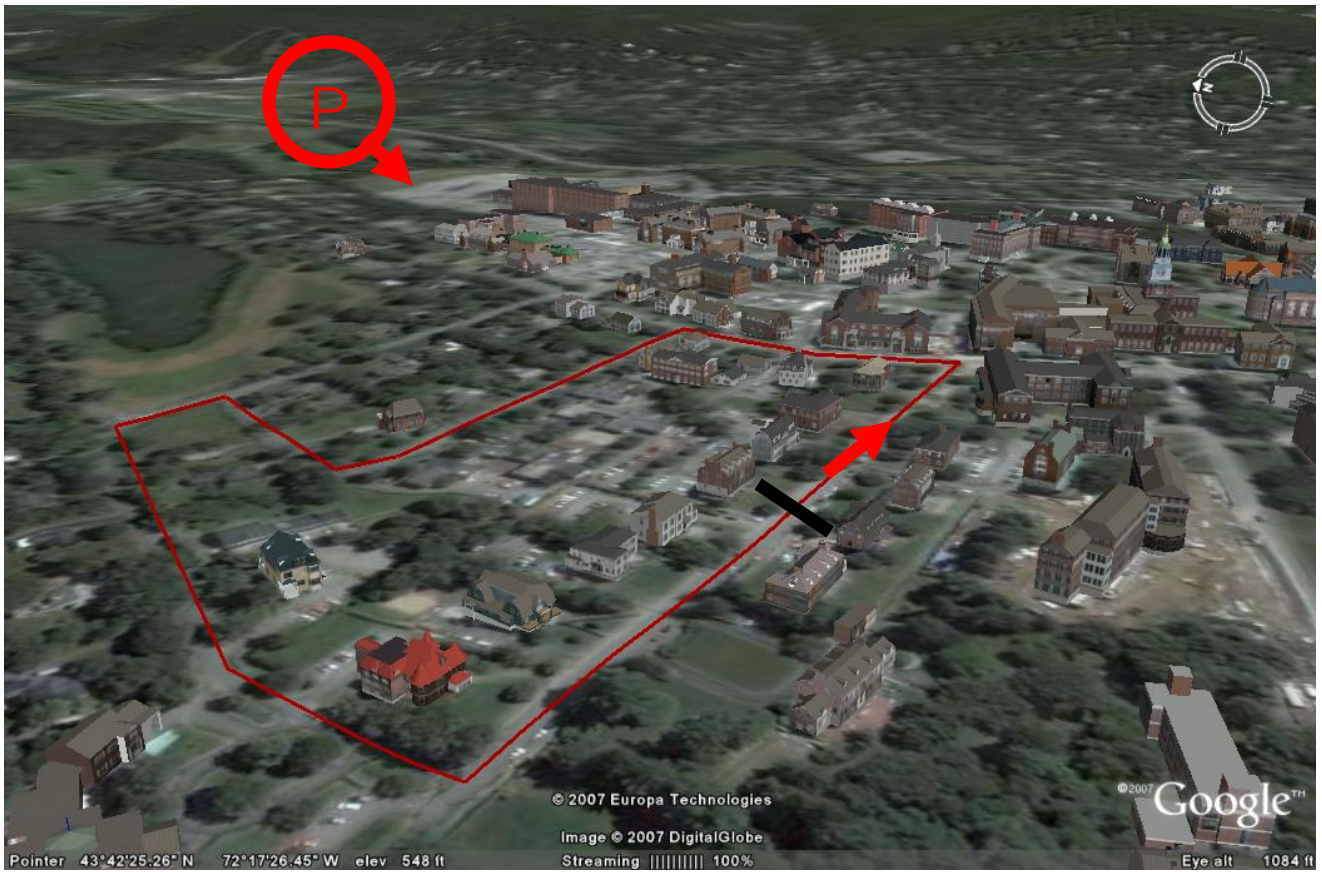


Course Maps

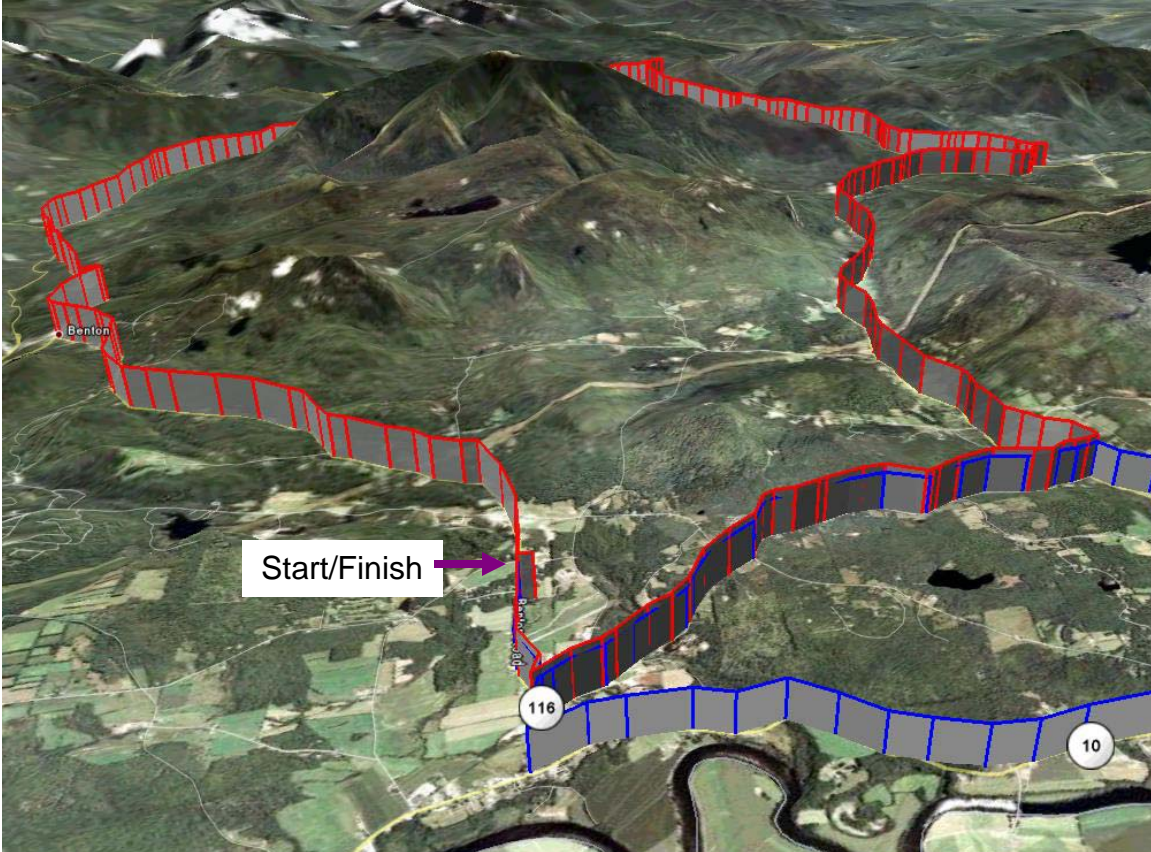
Team Time Trial



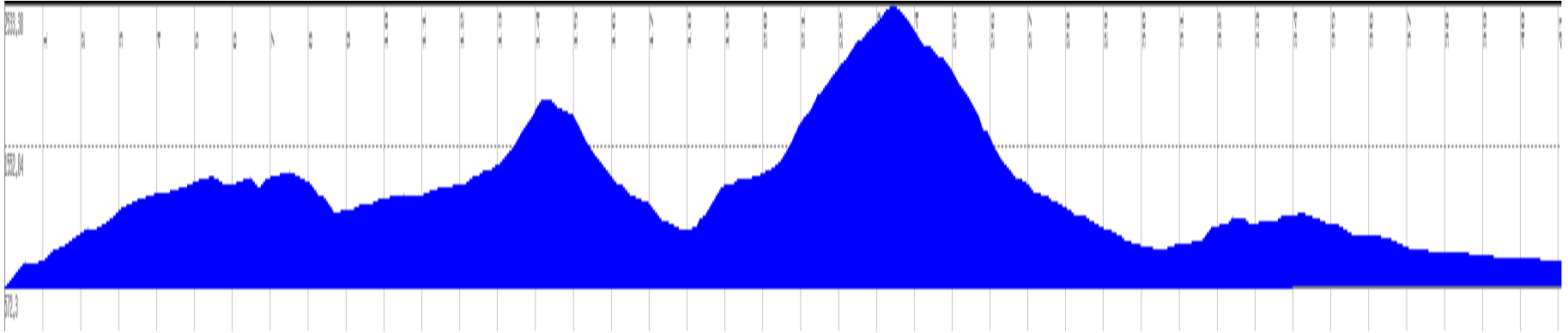
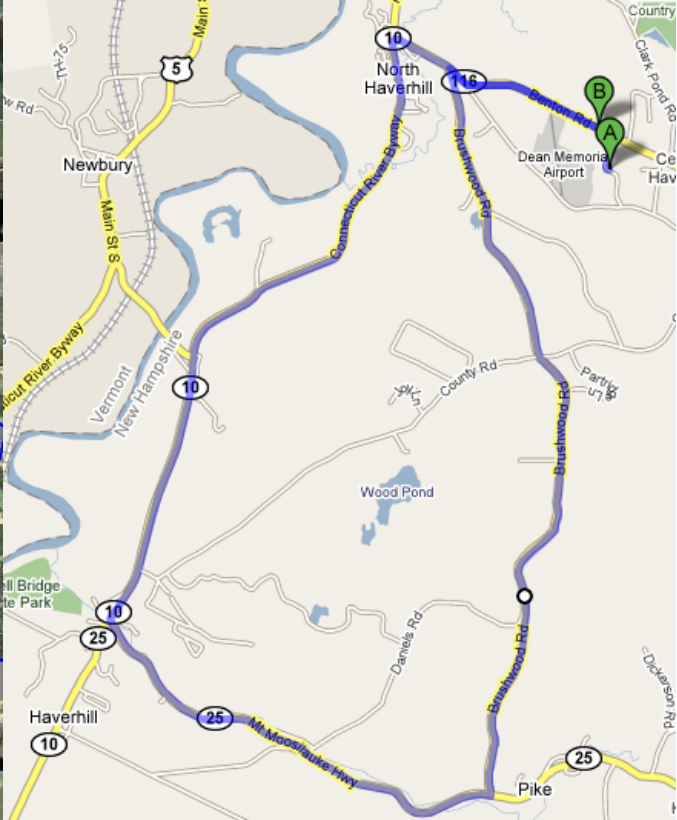
Criterion



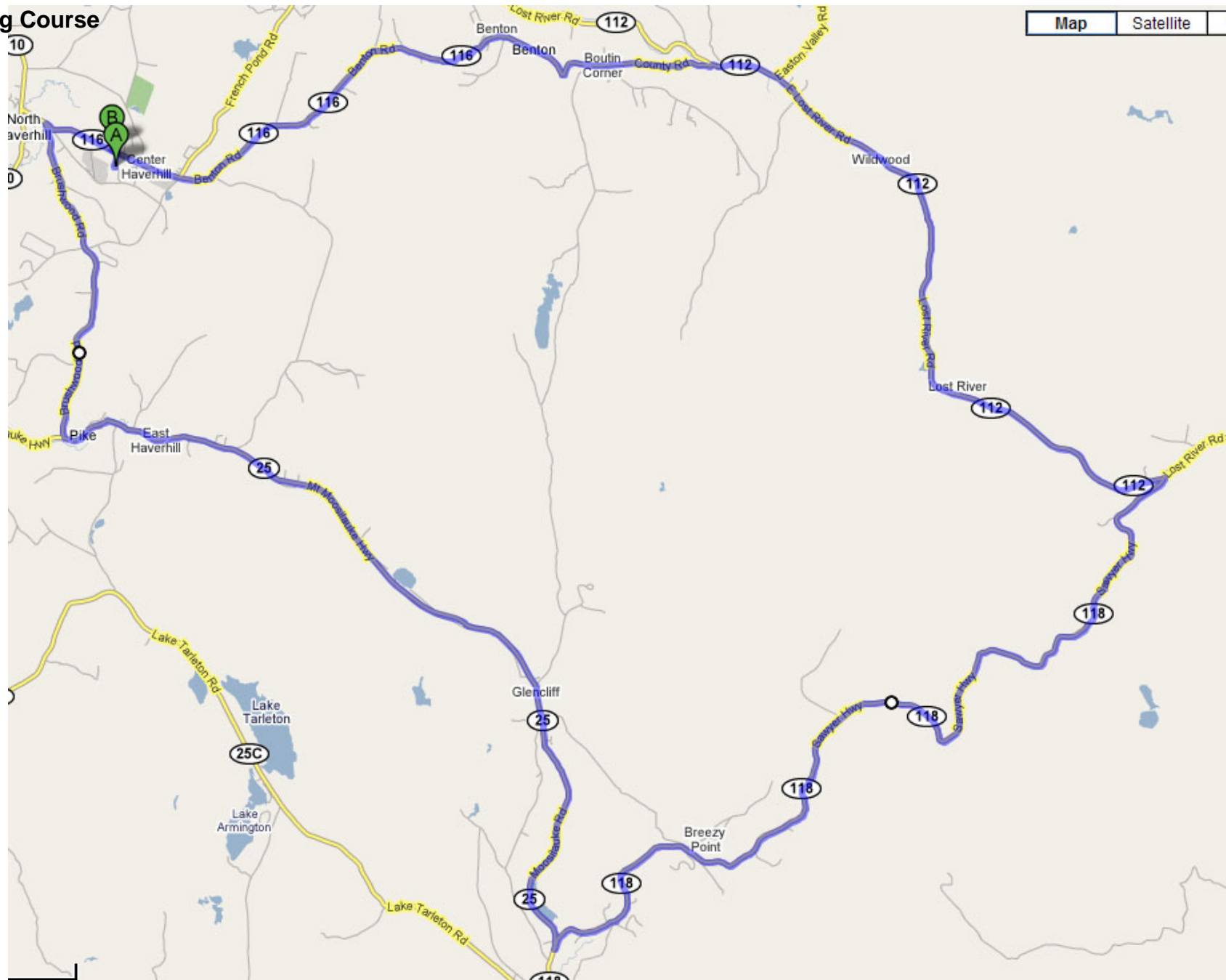
Road Race: Long course in red, short course in blue.



Short Course



Long Course



Getting around Hanover

